

How are you going to stop a steer from growing?

SHOULD a farmer cut off the feed of a young beef steer, for fear the steer will get too big? If he did, a lot of people would go hungry for beefsteak.

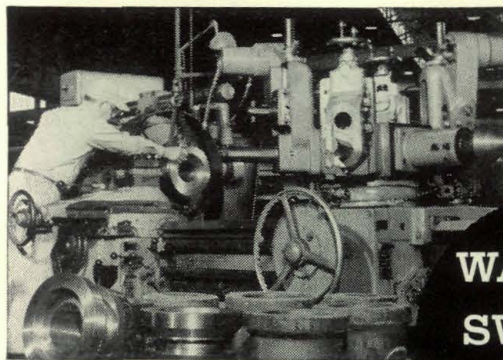
Yet there are some strange people who think corporations should be prevented from growing beyond some certain size (*they* to decide the size!). So by exorbitant taxes or other socialist laws, they plan to "shut off the feed" of companies—they would restrict profits, without which corporations cannot grow.

And so the stunted corporations cannot provide the new jobs, the better research, the increasing

values, any more than the stunted steer can provide the beef.

One great American corporation recently announced an increase in net profit, for 1955, of 47% over 1954. But they also paid 54% more in taxes, increased the number of their employees 48,000, and paid employees 517 million dollars more than in 1954. Plus tens of millions invested in new plants and machinery to help insure more and better jobs in the future.

Does anyone in his senses want to shut off the feed that produces that kind of growth?



*4-A Turret Lathe machining
large steel forgings.*

**WARNER
&
SWASEY**

Cleveland

**PRECISION
MACHINERY
SINCE 1880**

YOU CAN PRODUCE IT BETTER, FASTER, FOR LESS WITH WARNER & SWASEY MACHINE TOOLS, TEXTILE MACHINERY, CONSTRUCTION MACHINERY